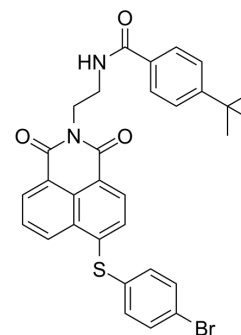


MCL-1/BCL-2-IN-1

Cat. No.:	HY-129681
CAS No.:	2493256-46-3
Molecular Formula:	C ₃₁ H ₂₇ BrN ₂ O ₃ S
Molecular Weight:	587.53
Target:	Bcl-2 Family
Pathway:	Apoptosis
Storage:	-20°C, stored under nitrogen * In solvent : -80°C, 6 months; -20°C, 1 month (stored under nitrogen)



SOLVENT & SOLUBILITY

In Vitro

DMSO : 10 mg/mL (17.02 mM; Need ultrasonic)

Concentration	Solvent	Mass		
		1 mg	5 mg	10 mg
Preparing Stock Solutions	1 mM	1.7020 mL	8.5102 mL	17.0204 mL
	5 mM	0.3404 mL	1.7020 mL	3.4041 mL
	10 mM	0.1702 mL	0.8510 mL	1.7020 mL

Please refer to the solubility information to select the appropriate solvent.

BIOLOGICAL ACTIVITY

Description

MCL-1/BCL-2-IN-2 (Compound Nap-1) is a potent and selective Mcl-1 and Bcl-2 dual inhibitor with IC₅₀s of 4.45 and 3.18 μM, respectively^[1].

IC₅₀ & Target

Mcl-1	Bcl-2
4.45 μM (IC ₅₀)	3.18 μM (IC ₅₀)

REFERENCES

[1]. Wang Z, et al. Proteolysis Targeting Chimeras for the Selective Degradation of Mcl-1/Bcl-2 Derived from Nonselective Target Binding Ligands. J Med Chem. 2019 Sep 12;62(17):8152-8163.

Caution: Product has not been fully validated for medical applications. For research use only.

Tel: 609-228-6898

Fax: 609-228-5909

E-mail: tech@MedChemExpress.com

Address: 1 Deer Park Dr, Suite Q, Monmouth Junction, NJ 08852, USA