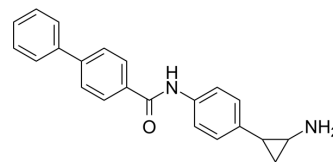


MC2652

Cat. No.:	HY-144755
CAS No.:	2771425-46-6
Molecular Formula:	C ₂₂ H ₂₀ N ₂ O
Molecular Weight:	328.41
Target:	Histone Demethylase
Pathway:	Epigenetics
Storage:	Please store the product under the recommended conditions in the Certificate of Analysis.



BIOLOGICAL ACTIVITY

Description	MC2652 (compound 1a) is a potent LSD1 inhibitor. MC2652 displays high inhibiting effects in MV4-11 and NB4 leukaemia cells. MC2652 shows antiproliferative activity against prostate cancer LNCaP cells ^[1] .
IC ₅₀ & Target	KDM1/LSD1

REFERENCES

[1]. Fioravanti R, et al. Heterocycle-containing tranylcypromine derivatives endowed with high anti-LSD1 activity. J Enzyme Inhib Med Chem. 2022 Dec;37(1):973-985.

Caution: Product has not been fully validated for medical applications. For research use only.

Tel: 609-228-6898

Fax: 609-228-5909

E-mail: tech@MedChemExpress.com

Address: 1 Deer Park Dr, Suite Q, Monmouth Junction, NJ 08852, USA