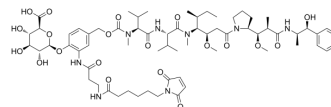


## MC-beta-glucuronide-MMAE-1

Cat. No.:	HY-136317
CAS No.:	1703778-92-0
Molecular Formula:	C <sub>66</sub> H <sub>98</sub> N <sub>8</sub> O <sub>20</sub>
Molecular Weight:	1323.53
Target:	Drug-Linker Conjugates for ADC
Pathway:	Antibody-drug Conjugate/ADC Related
Storage:	-20°C, protect from light * The compound is unstable in solutions, freshly prepared is recommended.



### SOLVENT & SOLUBILITY

#### In Vitro

DMSO : 200 mg/mL (151.11 mM; Need ultrasonic)

Preparing Stock Solutions	Solvent		1 mg	5 mg	10 mg
	Concentration	Mass			
	1 mM		0.7556 mL	3.7778 mL	7.5556 mL
	5 mM		0.1511 mL	0.7556 mL	1.5111 mL
	10 mM		0.0756 mL	0.3778 mL	0.7556 mL

Please refer to the solubility information to select the appropriate solvent.

### BIOLOGICAL ACTIVITY

#### Description

MC-beta-glucuronide-MMAE-1 is a agent-linker conjugate for ADC with potent antitumor activity by using MMAE (a tubulin polymerization inhibitor), linked via the cleavable ADC linker MC-beta-glucuronide.

#### IC<sub>50</sub> & Target

Auristatin

### REFERENCES

[1]. Okeley, et al. Intracellular Activation of SGN-35, a Potent Anti-CD30 Antibody-Drug Conjugate. *Clinical Cancer Research* (2010), 16(3), 888-897.

**Caution: Product has not been fully validated for medical applications. For research use only.**

Tel: 609-228-6898

Fax: 609-228-5909

E-mail: tech@MedChemExpress.com

Address: 1 Deer Park Dr, Suite Q, Monmouth Junction, NJ 08852, USA