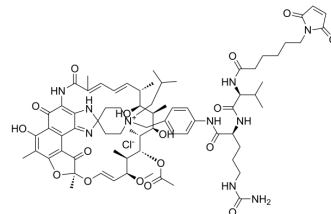


MC-Val-Cit-PAB-rifabutin

Cat. No.:	HY-128909
CAS No.:	2055900-34-8
Molecular Formula:	C ₇₄ H ₁₀₁ ClN ₁₀ O ₁₇
Molecular Weight:	1438.1
Target:	Drug-Linker Conjugates for ADC
Pathway:	Antibody-drug Conjugate/ADC Related
Storage:	4°C, sealed storage, away from moisture * In solvent : -80°C, 6 months; -20°C, 1 month (sealed storage, away from moisture)



SOLVENT & SOLUBILITY

In Vitro

DMSO : 20 mg/mL (13.91 mM; Need ultrasonic)

Preparing Stock Solutions	Solvent		Mass		
	Concentration		1 mg	5 mg	10 mg
	1 mM		0.6954 mL	3.4768 mL	6.9536 mL
	5 mM		0.1391 mL	0.6954 mL	1.3907 mL
	10 mM		0.0695 mL	0.3477 mL	0.6954 mL

Please refer to the solubility information to select the appropriate solvent.

BIOLOGICAL ACTIVITY

Description

MC-Val-Cit-PAB-rifabutin is a agent-linker conjugate for ADC with potent antitumor activity by using rifabutin (an DNA-dependent RNA polymerase inhibitor), linked via the ADC linker MC-Val-Cit-PAB.

IC₅₀ & Target

Traditional Cytotoxic Agents

REFERENCES

[1]. Staben LR, et al. Targeted drug delivery through the traceless release of tertiary and heteroaryl amines from antibody-drug conjugates. Nat Chem. 2016 Dec;8(12):1112-1119.

Caution: Product has not been fully validated for medical applications. For research use only.

Tel: 609-228-6898

Fax: 609-228-5909

E-mail: tech@MedChemExpress.com

Address: 1 Deer Park Dr, Suite Q, Monmouth Junction, NJ 08852, USA