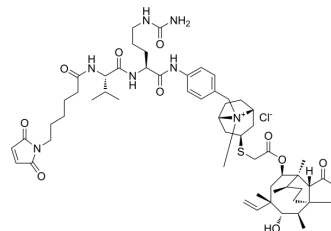


MC-Val-Cit-PAB-Retapamulin

Cat. No.:	HY-128906
CAS No.:	1639793-15-9
Molecular Formula:	C ₅₈ H ₈₆ ClN ₇ O ₁₀ S
Molecular Weight:	1108.86
Target:	Drug-Linker Conjugates for ADC
Pathway:	Antibody-drug Conjugate/ADC Related
Storage:	-20°C, sealed storage, away from moisture and light * In solvent : -80°C, 6 months; -20°C, 1 month (sealed storage, away from moisture and light)



SOLVENT & SOLUBILITY

In Vitro	DMSO : 100 mg/mL (90.18 mM; Need ultrasonic)				
		Solvent Concentration	Mass		
	Preparing Stock Solutions			1 mg	5 mg
		1 mM		0.9018 mL	4.5091 mL
		5 mM		0.1804 mL	0.9018 mL
	10 mM		0.0902 mL	0.4509 mL	
Please refer to the solubility information to select the appropriate solvent.					
In Vivo	1. Add each solvent one by one: 10% DMSO >> 40% PEG300 >> 5% Tween-80 >> 45% saline Solubility: ≥ 2.5 mg/mL (2.25 mM); Clear solution				
	2. Add each solvent one by one: 10% DMSO >> 90% (20% SBE-β-CD in saline) Solubility: 2.5 mg/mL (2.25 mM); Suspended solution; Need ultrasonic				
	3. Add each solvent one by one: 10% DMSO >> 90% corn oil Solubility: ≥ 2.5 mg/mL (2.25 mM); Clear solution				

BIOLOGICAL ACTIVITY

Description	MC-Val-Cit-PAB-Retapamulin is a agent-linker conjugate for ADC with potent antitumor activity by using Retapamulin (a ribosome inhibitor), linked via the ADC linker MC-Val-Cit-PAB.
IC₅₀ & Target	Traditional Cytotoxic Agents

REFERENCES

[1]. Staben LR, et al. Targeted drug delivery through the traceless release of tertiary and heteroaryl amines from antibody-drug conjugates. Nat Chem. 2016 Dec;8(12):1112-1119.

Caution: Product has not been fully validated for medical applications. For research use only.

Tel: 609-228-6898

Fax: 609-228-5909

E-mail: tech@MedChemExpress.com

Address: 1 Deer Park Dr, Suite Q, Monmouth Junction, NJ 08852, USA