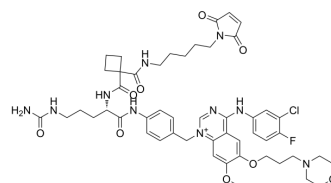


MC-Sq-Cit-PAB-Gefitinib

Cat. No.:	HY-128893
CAS No.:	1941168-63-3
Molecular Formula:	C ₅₀ H ₆₁ ClFN ₁₀ O ₉
Molecular Weight:	1000.53
Target:	Drug-Linker Conjugates for ADC
Pathway:	Antibody-drug Conjugate/ADC Related
Storage:	Please store the product under the recommended conditions in the Certificate of Analysis.



BIOLOGICAL ACTIVITY

Description	MC-Sq-Cit-PAB-Gefitinib is a agent-linker conjugate for ADC with potent antitumor activity by using Gefitinib (an EGFR tyrosine kinase inhibitor), linked via the ADC linker MC-Sq-Cit-PAB.
IC₅₀ & Target	Traditional Cytotoxic Agents

REFERENCES

- [1]. FLYGARE, John A, et al. Quaternary amine compounds and antibody-drug conjugates thereof. WO2016090050A1.
- [2]. Staben LR, et al. Targeted drug delivery through the traceless release of tertiary and heteroaryl amines from antibody-drug conjugates. Nat Chem. 2016 Dec;8(12):1112-1119.

Caution: Product has not been fully validated for medical applications. For research use only.

Tel: 609-228-6898

Fax: 609-228-5909

E-mail: tech@MedChemExpress.com

Address: 1 Deer Park Dr, Suite Q, Monmouth Junction, NJ 08852, USA