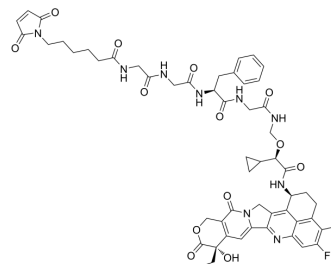


## MC-Gly-Gly-Phe-Gly-(R)-Cyclopropane-Exatecan

|                           |  |
|---------------------------|--|
| <b>Cat. No.:</b>          | HY-148668  |
| <b>CAS No.:</b>           | 2414254-51-4   |
| <b>Molecular Formula:</b> | C <sub>55</sub> H <sub>60</sub> FN <sub>9</sub> O <sub>13</sub>  |
| <b>Molecular Weight:</b>  | 1074.12  |
| <b>Target:</b>            | Topoisomerase; Drug-Linker Conjugates for ADC  |
| <b>Pathway:</b>           | Cell Cycle/DNA Damage; Antibody-drug Conjugate/ADC Related   |
| <b>Storage:</b>           | -20°C, sealed storage, away from moisture and light<br>* In solvent : -80°C, 6 months; -20°C, 1 month (sealed storage, away from moisture and light) |



### BIOLOGICAL ACTIVITY

|                                     |  |
|-------------------------------------|--|
| <b>Description</b>                  | MC-Gly-Gly-Phe-Gly-(R)-Cyclopropane-Exatecan is a agent-linker conjugates for ADC, consisting Exatecan (HY-13631). Exatecan is a DNA Topoisomerase I inhibitor (IC <sub>50</sub> =2.2 μM) <sup>[1]</sup> . |
| <b>IC<sub>50</sub> &amp; Target</b> | Topoisomerase I  |

### REFERENCES

[1]. Ying Hua, et al. Anti-B7H3 antibody-exatecan analog conjugate and medicinal use thereof: World Intellectual Property Organization, WO2020063673[P]. 2020-04-02.

**Caution: Product has not been fully validated for medical applications. For research use only.**

Tel: 609-228-6898

Fax: 609-228-5909

E-mail: tech@MedChemExpress.com

Address: 1 Deer Park Dr, Suite Q, Monmouth Junction, NJ 08852, USA