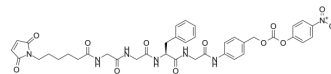


## MC-Gly-Gly-Phe-Gly-PAB-PNP

Cat. No.:	HY-147164
CAS No.:	2632342-16-4
Molecular Formula:	C <sub>39</sub> H <sub>41</sub> N <sub>7</sub> O <sub>12</sub>
Molecular Weight:	799.78
Target:	ADC Linker
Pathway:	Antibody-drug Conjugate/ADC Related
Storage:	Please store the product under the recommended conditions in the Certificate of Analysis.



### BIOLOGICAL ACTIVITY

Description	MC-Gly-Gly-Phe-Gly-PAB-PNP is a linker for synthesis anti-human EGFR antibody agent conjugate <sup>[1]</sup> .
IC <sub>50</sub> & Target	Cleavable

### REFERENCES

[1]. RZ. Li, et al. Class of anti-human egfr antibody drug conjugate and preparation method and application thereof. WO2021051720A1 (compound 5l)

**Caution: Product has not been fully validated for medical applications. For research use only.**

Tel: 609-228-6898

Fax: 609-228-5909

E-mail: tech@MedChemExpress.com

Address: 1 Deer Park Dr, Suite Q, Monmouth Junction, NJ 08852, USA