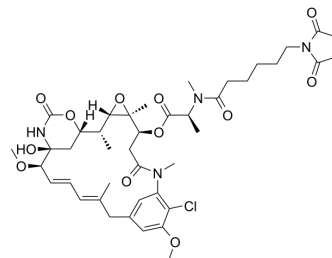


MC-DM1

Cat. No.:	HY-136286
CAS No.:	1375089-56-7
Molecular Formula:	C ₄₂ H ₅₅ ClN ₄ O ₁₂
Molecular Weight:	843.36
Target:	Drug-Linker Conjugates for ADC
Pathway:	Antibody-drug Conjugate/ADC Related
Storage:	-20°C, protect from light * In solvent : -80°C, 6 months; -20°C, 1 month (protect from light)



SOLVENT & SOLUBILITY

In Vitro	DMSO : 220 mg/mL (260.86 mM; Need ultrasonic)																							
	<table border="1"> <thead> <tr> <th rowspan="2">Solvent Concentration</th> <th>Mass</th> <th>1 mg</th> <th>5 mg</th> <th>10 mg</th> </tr> </thead> <tbody> <tr> <td></td> <td></td> <td></td> <td></td> <td></td> </tr> <tr> <td rowspan="3">Preparing Stock Solutions</td> <td>1 mM</td> <td>1.1857 mL</td> <td>5.9287 mL</td> <td>11.8573 mL</td> </tr> <tr> <td>5 mM</td> <td>0.2371 mL</td> <td>1.1857 mL</td> <td>2.3715 mL</td> </tr> <tr> <td>10 mM</td> <td>0.1186 mL</td> <td>0.5929 mL</td> <td>1.1857 mL</td> </tr> </tbody> </table>	Solvent Concentration	Mass	1 mg	5 mg	10 mg						Preparing Stock Solutions	1 mM	1.1857 mL	5.9287 mL	11.8573 mL	5 mM	0.2371 mL	1.1857 mL	2.3715 mL	10 mM	0.1186 mL	0.5929 mL	1.1857 mL
Solvent Concentration	Mass		1 mg	5 mg	10 mg																			
Preparing Stock Solutions	1 mM	1.1857 mL	5.9287 mL	11.8573 mL																				
	5 mM	0.2371 mL	1.1857 mL	2.3715 mL																				
	10 mM	0.1186 mL	0.5929 mL	1.1857 mL																				
	Please refer to the solubility information to select the appropriate solvent.																							
In Vivo	1. Add each solvent one by one: 10% DMSO >> 90% corn oil Solubility: ≥ 5.5 mg/mL (6.52 mM); Clear solution																							

BIOLOGICAL ACTIVITY

Description	MC-DM1 is a agent-linker conjugate composed of a potent microtubule-disrupting agent DM1 and a linker MC to make antibody agent conjugate (ADC) ^[1] .
IC₅₀ & Target	Maytansinoids

REFERENCES

[1]. Shao S, et al. Site-specific and hydrophilic ADCs through disulfide-bridged linker and branched PEG. *Bioorg Med Chem Lett*. 2018 May 1;28(8):1363-1370.

Caution: Product has not been fully validated for medical applications. For research use only.

Tel: 609-228-6898

Fax: 609-228-5909

E-mail: tech@MedChemExpress.com

Address: 1 Deer Park Dr, Suite Q, Monmouth Junction, NJ 08852, USA