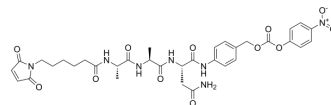


MC-Ala-Ala-Asn-PAB-PNP

Cat. No.:	HY-148031
CAS No.:	1638970-45-2
Molecular Formula:	C ₃₄ H ₃₉ N ₇ O ₁₂
Molecular Weight:	737.71
Target:	ADC Linker
Pathway:	Antibody-drug Conjugate/ADC Related
Storage:	Please store the product under the recommended conditions in the Certificate of Analysis.



BIOLOGICAL ACTIVITY

Description	MC-Ala-Ala-Asn-PAB-PNP is a peptide, can be used to synthesize specifically activated micromolecular target coupling body [1].
IC ₅₀ & Target	Cleavable

REFERENCES

[1]. Liu Chen, et al. Specifically activated micromolecular target coupling body in tumor microenvironment and use thereof. WO2016026458A1

Caution: Product has not been fully validated for medical applications. For research use only.

Tel: 609-228-6898

Fax: 609-228-5909

E-mail: tech@MedChemExpress.com

Address: 1 Deer Park Dr, Suite Q, Monmouth Junction, NJ 08852, USA