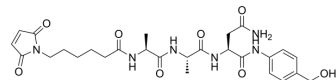


## MC-Ala-Ala-Asn-PAB

Cat. No.:	HY-139245
CAS No.:	1638970-44-1
Molecular Formula:	C <sub>27</sub> H <sub>36</sub> N <sub>6</sub> O <sub>8</sub>
Molecular Weight:	572.61
Target:	ADC Linker
Pathway:	Antibody-drug Conjugate/ADC Related
Storage:	Please store the product under the recommended conditions in the Certificate of Analysis.



### BIOLOGICAL ACTIVITY

#### Description

MC-Ala-Ala-Asn-PAB is a linker extracted from patent CN104147612A, page 14. MC-Ala-Ala-Asn-PAB can be used to synthesis the tumor microenvironment specific activated micromolecular targeted conjugate<sup>[1]</sup>.

### REFERENCES

[1]. Chen L, et, al. Tumor microenvironment specific activated micromolecular targeted conjugate and application thereof. CN104147612A.

**Caution: Product has not been fully validated for medical applications. For research use only.**

Tel: 609-228-6898

Fax: 609-228-5909

E-mail: tech@MedChemExpress.com

Address: 1 Deer Park Dr, Suite Q, Monmouth Junction, NJ 08852, USA