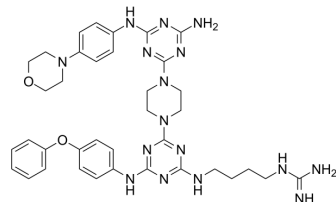


MC-1-F2

Cat. No.:	HY-149894
CAS No.:	2376894-10-7
Molecular Formula:	C ₃₇ H ₄₆ N ₁₆ O ₂
Molecular Weight:	746.87
Target:	Biochemical Assay Reagents
Pathway:	Others
Storage:	Please store the product under the recommended conditions in the Certificate of Analysis.



BIOLOGICAL ACTIVITY

Description	MC-1-F2 is a FOXC2 inhibitor that reduces epithelial-mesenchymal transition (EMT) markers in breast cancer cells, suppresses cancer stem cell (CSC) properties and reduces invasiveness in castration-resistant prostate cancer (CRPC) cells. There is a synergistic effect between MC-1-F2 and Docetaxel, which has the potential to be used in combination to study CRPC ^[1] .
IC ₅₀ & Target	FOXC2 ^[1] .

REFERENCES

[1]. Castaneda M, et al. A FOXC2 inhibitor, MC-1-F2, as a therapeutic candidate for targeting EMT in castration-resistant prostate cancer. *Bioorg Med Chem Lett*. 2023 Jul 15;91:129369.

Caution: Product has not been fully validated for medical applications. For research use only.

Tel: 609-228-6898

Fax: 609-228-5909

E-mail: tech@MedChemExpress.com

Address: 1 Deer Park Dr, Suite Q, Monmouth Junction, NJ 08852, USA