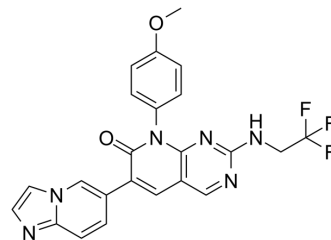


MAT2A-IN-2

Cat. No.:	HY-142929
CAS No.:	2565671-21-6
Molecular Formula:	C ₂₃ H ₁₇ F ₃ N ₆ O ₂
Molecular Weight:	466.42
Target:	Somatostatin Receptor
Pathway:	GPCR/G Protein; Neuronal Signaling
Storage:	Please store the product under the recommended conditions in the Certificate of Analysis.



BIOLOGICAL ACTIVITY

Description

MAT2A-IN-2 is a potent inhibitor of MAT2A. The expression level of MAT2A is abnormally high in several types of tumors, including gastric, colon, liver and pancreatic cancers. MAT2A-IN-2 reduces the proliferative activity of MTAP-deficient cancer cells. MAT2A-IN-2 has the potential for the research of cancer diseases (extracted from patent WO2020243376A1, compound 172)^[1].

REFERENCES

[1]. Zenon D. Konteatis, et al. Heterobicyclic inhibitors of mat2a and methods of use for treating cancer. Patent WO2020243376A1.

Caution: Product has not been fully validated for medical applications. For research use only.

Tel: 609-228-6898

Fax: 609-228-5909

E-mail: tech@MedChemExpress.com

Address: 1 Deer Park Dr, Suite Q, Monmouth Junction, NJ 08852, USA