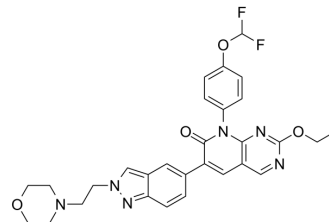


## MAT2A-IN-1

Cat. No.:	HY-142928
CAS No.:	2667053-18-9
Molecular Formula:	C <sub>29</sub> H <sub>28</sub> F <sub>2</sub> N <sub>6</sub> O <sub>4</sub>
Molecular Weight:	562.57
Target:	Somatostatin Receptor
Pathway:	GPCR/G Protein; Neuronal Signaling
Storage:	Please store the product under the recommended conditions in the Certificate of Analysis.



## BIOLOGICAL ACTIVITY

### Description

MAT2A-IN-1 is a potent inhibitor of MAT2A. The expression level of MAT2A is abnormally high in several types of tumors, including gastric, colon, liver and pancreatic cancers. MAT2A-IN-1 reduces the proliferative activity of MTAP-deficient cancer cells. MAT2A-IN-1 has the potential for the research of cancer diseases (extracted from patent WO2021139775A1, compound 64)<sup>[1]</sup>.

## REFERENCES

[1]. Li Zhen, et al. Pyridone compounds and applications. Patent WO2021139775A1.

**Caution: Product has not been fully validated for medical applications. For research use only.**

Tel: 609-228-6898

Fax: 609-228-5909

E-mail: tech@MedChemExpress.com

Address: 1 Deer Park Dr, Suite Q, Monmouth Junction, NJ 08852, USA