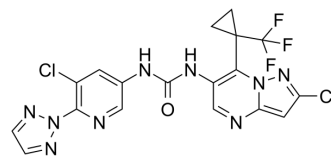


MALT1-IN-6

Cat. No.:	HY-143424
CAS No.:	2254669-07-1
Molecular Formula:	C ₁₈ H ₁₂ Cl ₂ F ₃ N ₉ O
Molecular Weight:	498.25
Target:	MALT1
Pathway:	Metabolic Enzyme/Protease; NF-κB
Storage:	Please store the product under the recommended conditions in the Certificate of Analysis.



BIOLOGICAL ACTIVITY

Description	MALT1-IN-6 is a potent MALT1 protease inhibitor with a K _i of 9 nM. MALT1-IN-6 has anticancer effects (WO2018226150A1; Compound 4) ^[1] .
IC ₅₀ & Target	Ki: 9 nM (MALT1 protease) ^[1]

REFERENCES

[1]. Karolina Ersmark, et al. Pyrazolopyrimidine as malt-1 inhibitors. WO2018226150A1.

Caution: Product has not been fully validated for medical applications. For research use only.

Tel: 609-228-6898

Fax: 609-228-5909

E-mail: tech@MedChemExpress.com

Address: 1 Deer Park Dr, Suite Q, Monmouth Junction, NJ 08852, USA