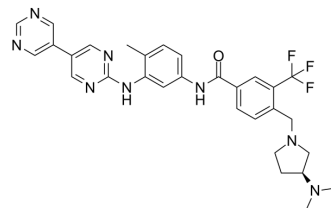


Lyn-IN-1

Cat. No.:	HY-12039		
CAS No.:	887650-05-7		
Molecular Formula:	C ₃₀ H ₃₁ F ₃ N ₈ O		
Molecular Weight:	576.62		
Target:	Bcr-Abl		
Pathway:	Protein Tyrosine Kinase/RTK		
Storage:	Powder	-20°C	3 years
		4°C	2 years
	In solvent	-80°C	2 years
		-20°C	1 year



SOLVENT & SOLUBILITY

In Vitro	DMSO : 50 mg/mL (86.71 mM; Need ultrasonic)			
		Solvent Concentration	Mass	
			1 mg	5 mg
	Preparing Stock Solutions	1 mM	1.7342 mL	8.6712 mL
	5 mM	0.3468 mL	1.7342 mL	
	10 mM	0.1734 mL	0.8671 mL	1.7342 mL
Please refer to the solubility information to select the appropriate solvent.				
In Vivo	1. Add each solvent one by one: 10% DMSO >> 40% PEG300 >> 5% Tween-80 >> 45% saline Solubility: ≥ 2.5 mg/mL (4.34 mM); Clear solution			
	2. Add each solvent one by one: 10% DMSO >> 90% (20% SBE-β-CD in saline) Solubility: 2.5 mg/mL (4.34 mM); Suspended solution; Need ultrasonic			
	3. Add each solvent one by one: 10% DMSO >> 90% corn oil Solubility: ≥ 2.5 mg/mL (4.34 mM); Clear solution			

BIOLOGICAL ACTIVITY

Description	Lyn-IN-1 (Bafetinib analog) is a potent and selective dual Bcr-Abl/Lyn inhibitor, extracted from patent WO2014169128A1.
-------------	---

REFERENCES

[1]. From PCT Int.Appl.(2014), WO2014169128A1

Caution: Product has not been fully validated for medical applications. For research use only.

Tel: 609-228-6898

Fax: 609-228-5909

E-mail: tech@MedChemExpress.com

Address: 1 Deer Park Dr, Suite Q, Monmouth Junction, NJ 08852, USA