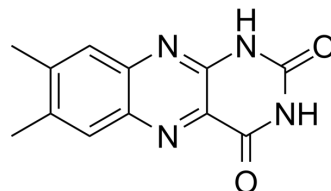


Lumichrome

Cat. No.:	HY-115385		
CAS No.:	1086-80-2		
Molecular Formula:	C ₁₂ H ₁₀ N ₄ O ₂		
Molecular Weight:	242.23		
Target:	Apoptosis; Endogenous Metabolite		
Pathway:	Apoptosis; Metabolic Enzyme/Protease		
Storage:	Powder	-20°C	3 years
		4°C	2 years
	In solvent	-80°C	6 months
		-20°C	1 month



SOLVENT & SOLUBILITY

In Vitro

DMSO : 2 mg/mL (8.26 mM; ultrasonic and warming and heat to 60°C)

Concentration	Mass		
	1 mg	5 mg	10 mg
1 mM	4.1283 mL	20.6415 mL	41.2831 mL
5 mM	0.8257 mL	4.1283 mL	8.2566 mL
10 mM	---	---	---

Please refer to the solubility information to select the appropriate solvent.

BIOLOGICAL ACTIVITY

Description

Lumichrome, a photodegradation product of Riboflavin, is an endogenous compound in humans. Lumichrome inhibits human lung cancer cell growth and induces apoptosis via a p53-dependent mechanism^{[1][2]}.

REFERENCES

- [1]. Bergh VJ, et al. Influence of formulation on photoinactivation of bacteria by lumichrome. *Pharmazie*. 2015;70(9):574-580.
- [2]. Chantarangong W, et al. Lumichrome Inhibits Human Lung Cancer Cell Growth and Induces Apoptosis via a p53-Dependent Mechanism. *Nutr Cancer*. 2019;71(8):1390-1402.

Caution: Product has not been fully validated for medical applications. For research use only.

Tel: 609-228-6898

Fax: 609-228-5909

E-mail: tech@MedChemExpress.com

Address: 1 Deer Park Dr, Suite Q, Monmouth Junction, NJ 08852, USA