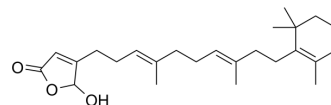


Luffariellolide

Cat. No.:	HY-118725
CAS No.:	111149-87-2
Molecular Formula:	C ₂₅ H ₃₈ O ₃
Molecular Weight:	386.57
Target:	Phospholipase
Pathway:	Metabolic Enzyme/Protease
Storage:	Please store the product under the recommended conditions in the Certificate of Analysis.



BIOLOGICAL ACTIVITY

Description

Luffariellolide is an inhibitor of human synovial fluid phospholipase A2 (HSF-PLA2) (IC₅₀=5 μM). Luffariellolide effectively inhibits phorbol ester (PMA)-induced ear edema (ED₅₀=50 μg/ear)^[1].

REFERENCES

[1]. K B Glaser, et al. Cellular and topical in vivo inflammatory murine models in the evaluation of inhibitors of phospholipase A2. *Skin Pharmacol.* 1995;8(6):300-8.

Caution: Product has not been fully validated for medical applications. For research use only.

Tel: 609-228-6898

Fax: 609-228-5909

E-mail: tech@MedChemExpress.com

Address: 1 Deer Park Dr, Suite Q, Monmouth Junction, NJ 08852, USA