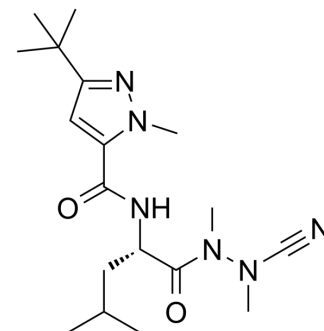


LmCPB-IN-1

Cat. No.:	HY-146649
CAS No.:	2151025-98-6
Molecular Formula:	C ₁₈ H ₃₀ N ₆ O ₂
Molecular Weight:	362.47
Target:	Parasite; Cathepsin
Pathway:	Anti-infection; Metabolic Enzyme/Protease
Storage:	Please store the product under the recommended conditions in the Certificate of Analysis.



BIOLOGICAL ACTIVITY

Description	LmCPB-IN-1 (compound 35) is a potent and reversible covalent <i>Leishmania mexicana</i> cysteine protease B (LmCPB) inhibitor with a pK _i of 9.7 ^[1] .
IC ₅₀ & Target	pK _i : 9.7 (<i>Leishmania mexicana</i> cysteine protease B) ^[1]

REFERENCES

[1]. Jean F R Ribeiro, et al. Crystal structure of *Leishmania mexicana* cysteine protease B in complex with a high-affinity azadipeptide nitrile inhibitor. *Bioorg Med Chem.* 2020 Nov 15;28(22):115743.

Caution: Product has not been fully validated for medical applications. For research use only.

Tel: 609-228-6898

Fax: 609-228-5909

E-mail: tech@MedChemExpress.com

Address: 1 Deer Park Dr, Suite Q, Monmouth Junction, NJ 08852, USA