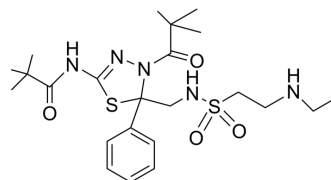


## Litronesib Racemate

Cat. No.:	HY-14846A		
CAS No.:	546111-97-1		
Molecular Formula:	C <sub>23</sub> H <sub>37</sub> N <sub>5</sub> O <sub>4</sub> S <sub>2</sub>		
Molecular Weight:	511.7		
Target:	Kinesin		
Pathway:	Cell Cycle/DNA Damage; Cytoskeleton		
Storage:	Powder	-20°C	3 years
		4°C	2 years
	In solvent	-80°C	2 years
		-20°C	1 year



### SOLVENT & SOLUBILITY

In Vitro	DMSO : 100 mg/mL (195.43 mM; Need ultrasonic)					
		Solvent Concentration	Mass	1 mg	5 mg	10 mg
	Preparing Stock Solutions	1 mM		1.9543 mL	9.7713 mL	19.5427 mL
		5 mM		0.3909 mL	1.9543 mL	3.9085 mL
10 mM			0.1954 mL	0.9771 mL	1.9543 mL	
Please refer to the solubility information to select the appropriate solvent.						
In Vivo	1. Add each solvent one by one: 10% DMSO >> 40% PEG300 >> 5% Tween-80 >> 45% saline Solubility: ≥ 2.5 mg/mL (4.89 mM); Clear solution					
	2. Add each solvent one by one: 10% DMSO >> 90% (20% SBE-β-CD in saline) Solubility: ≥ 2.5 mg/mL (4.89 mM); Clear solution					
	3. Add each solvent one by one: 10% DMSO >> 90% corn oil Solubility: ≥ 2.5 mg/mL (4.89 mM); Clear solution					

### BIOLOGICAL ACTIVITY

Description	Litronesib Racemate (LY2523355 Racemate) is the racemate of litronesib. Litronesib is a selective, allosteric inhibitor of kinesin Eg5 <sup>[1]</sup> .
IC <sub>50</sub> & Target	kinesin Eg5 <sup>[1]</sup>

### REFERENCES

**Caution: Product has not been fully validated for medical applications. For research use only.**

Tel: 609-228-6898

Fax: 609-228-5909

E-mail: [tech@MedChemExpress.com](mailto:tech@MedChemExpress.com)

Address: 1 Deer Park Dr, Suite Q, Monmouth Junction, NJ 08852, USA