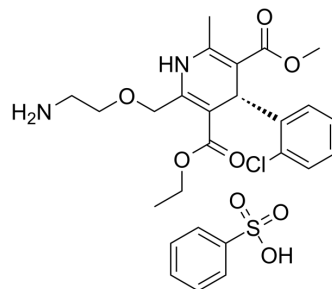


Levamlodipine besylate

Cat. No.:	HY-14744A
CAS No.:	150566-71-5
Molecular Formula:	C ₂₆ H ₃₁ ClN ₂ O ₈ S
Molecular Weight:	567.05
Target:	Calcium Channel
Pathway:	Membrane Transporter/Ion Channel; Neuronal Signaling
Storage:	-20°C, sealed storage, away from moisture and light * In solvent : -80°C, 6 months; -20°C, 1 month (sealed storage, away from moisture and light)



SOLVENT & SOLUBILITY

In Vitro

DMSO : ≥ 150 mg/mL (264.53 mM)
 H₂O : ≥ 3.33 mg/mL (5.87 mM)
 * "≥" means soluble, but saturation unknown.

Preparing Stock Solutions	Solvent Concentration	Mass		
		1 mg	5 mg	10 mg
	1 mM	1.7635 mL	8.8176 mL	17.6351 mL
	5 mM	0.3527 mL	1.7635 mL	3.5270 mL
	10 mM	0.1764 mL	0.8818 mL	1.7635 mL

Please refer to the solubility information to select the appropriate solvent.

In Vivo

- Add each solvent one by one: 10% DMSO >> 40% PEG300 >> 5% Tween-80 >> 45% saline
Solubility: ≥ 2.5 mg/mL (4.41 mM); Clear solution
- Add each solvent one by one: 10% DMSO >> 90% (20% SBE-β-CD in saline)
Solubility: ≥ 2.5 mg/mL (4.41 mM); Clear solution
- Add each solvent one by one: 10% DMSO >> 90% corn oil
Solubility: ≥ 2.5 mg/mL (4.41 mM); Clear solution

BIOLOGICAL ACTIVITY

Description

Levamlodipine besylate ((S)-Amlodipine besylate) is a powerful dihydropyridine calcium channel blocker, possessing vasodilation properties and used in the treatment of hypertension and angina^[1].

IC₅₀ & Target

Calcium channel^[1].

REFERENCES

[1]. Jain R, et al. Polyaniline-graphene oxide nanocomposite sensor for quantification of calcium channel blocker levamlodipine. Mater Sci Eng C Mater Biol Appl. 2016 Aug 1;65:205-14.

Caution: Product has not been fully validated for medical applications. For research use only.

Tel: 609-228-6898

Fax: 609-228-5909

E-mail: tech@MedChemExpress.com

Address: 1 Deer Park Dr, Suite Q, Monmouth Junction, NJ 08852, USA