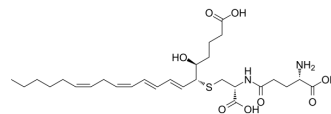


Leukotriene F4

Cat. No.:	HY-130440
CAS No.:	83851-42-7
Molecular Formula:	C ₂₈ H ₄₄ N ₂ O ₈ S
Molecular Weight:	568.72
Target:	Endogenous Metabolite; Leukotriene Receptor
Pathway:	Metabolic Enzyme/Protease; GPCR/G Protein
Storage:	Please store the product under the recommended conditions in the Certificate of Analysis.



BIOLOGICAL ACTIVITY

Description	Leukotriene F4 (LTF4), is a lipid that belongs to the Cysteinyl Leukotriene (CysTL) family ^[1] . Leukotriene F4 induces bronchoconstriction with an ED ₅₀ of 16 µg/kg ^[2] . The precursor of LTF4 is Leukotriene E4 (LTE4), which is formed from the action of a glutamyl transferase ^[1] .
IC ₅₀ & Target	Human Endogenous Metabolite

REFERENCES

[1]. Reddanna P, et al. Carboxypeptidase A-catalyzed direct conversion of leukotriene C4 to leukotriene F4. Arch Biochem Biophys. 2003;413(2):158-163.

Caution: Product has not been fully validated for medical applications. For research use only.

Tel: 609-228-6898

Fax: 609-228-5909

E-mail: tech@MedChemExpress.com

Address: 1 Deer Park Dr, Suite Q, Monmouth Junction, NJ 08852, USA