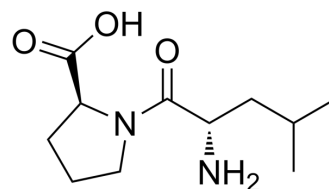


Leucylproline

Cat. No.:	HY-114729
CAS No.:	6403-35-6
Molecular Formula:	C ₁₁ H ₂₀ N ₂ O ₃
Molecular Weight:	228.29
Target:	Amino Acid Derivatives
Pathway:	Others
Storage:	Please store the product under the recommended conditions in the Certificate of Analysis.



BIOLOGICAL ACTIVITY

Description	Leucylproline, a dipeptide, plays important roles in the medium-dependent regulation of proteinase activity ^[1] .
-------------	--

REFERENCES

[1]. Laan H, et al. Regulation of proteinase synthesis in *Lactococcus lactis*[J]. *Acta biotechnologica*, 1993, 13(2): 95-101.

Caution: Product has not been fully validated for medical applications. For research use only.

Tel: 609-228-6898

Fax: 609-228-5909

E-mail: tech@MedChemExpress.com

Address: 1 Deer Park Dr, Suite Q, Monmouth Junction, NJ 08852, USA