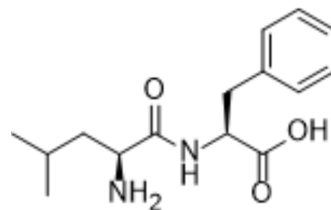


Leucyl-phenylalanine

Cat. No.:	HY-113278	
CAS No.:	3063-05-6	
Molecular Formula:	C ₁₅ H ₂₂ N ₂ O ₃	
Molecular Weight:	278.35	
Target:	Endogenous Metabolite	
Pathway:	Metabolic Enzyme/Protease	
Storage:	Powder	-20°C 3 years
	In solvent	-80°C 6 months
		-20°C 1 month



SOLVENT & SOLUBILITY

In Vitro

H₂O : 4 mg/mL (14.37 mM; Need ultrasonic)
 Ethanol : 1.11 mg/mL (3.99 mM; Need ultrasonic)
 DMSO : < 1 mg/mL (ultrasonic) (insoluble or slightly soluble)

Preparing Stock Solutions	Solvent	1 mg	5 mg	10 mg
	Concentration	1 mg	5 mg	10 mg
	1 mM	3.5926 mL	17.9630 mL	35.9260 mL
	5 mM	0.7185 mL	3.5926 mL	7.1852 mL
	10 mM	0.3593 mL	1.7963 mL	3.5926 mL

Please refer to the solubility information to select the appropriate solvent.

In Vivo

1. Add each solvent one by one: PBS
 Solubility: 2 mg/mL (7.19 mM); Clear solution; Need ultrasonic and warming and heat to 60°C

BIOLOGICAL ACTIVITY

Description

Leucyl-phenylalanine belongs to the class of organic compounds known as dipeptides.

IC₅₀ & Target

Human Endogenous Metabolite

Caution: Product has not been fully validated for medical applications. For research use only.

Tel: 609-228-6898

Fax: 609-228-5909

E-mail: tech@MedChemExpress.com

Address: 1 Deer Park Dr, Suite Q, Monmouth Junction, NJ 08852, USA