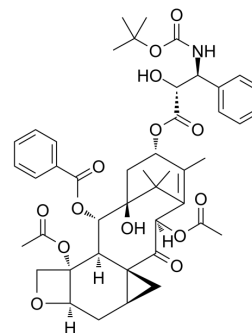


Larotaxel

Cat. No.:	HY-125374		
CAS No.:	156294-36-9		
Molecular Formula:	C ₄₅ H ₅₃ NO ₁₄		
Molecular Weight:	831.9		
Target:	Apoptosis		
Pathway:	Apoptosis		
Storage:	Powder	-20°C	3 years
		4°C	2 years
	In solvent	-80°C	6 months
		-20°C	1 month



SOLVENT & SOLUBILITY

In Vitro

DMSO : ≥ 50 mg/mL (60.10 mM)
 * "≥" means soluble, but saturation unknown.

Preparing Stock Solutions	Solvent	Mass	1 mg	5 mg	10 mg
	Concentration				
	1 mM		1.2021 mL	6.0103 mL	12.0207 mL
	5 mM		0.2404 mL	1.2021 mL	2.4041 mL
	10 mM		0.1202 mL	0.6010 mL	1.2021 mL

Please refer to the solubility information to select the appropriate solvent.

BIOLOGICAL ACTIVITY

Description

Larotaxel (XRP9881) is a taxane analogue with preclinical activity against taxane-resistant breast cancer. Larotaxel (XRP9881) exerts its cytotoxic effect by promoting tubulin assembly and stabilizing microtubules, ultimately leading to cell death by apoptosis. It presents the ability to cross the blood brain barrier and has a much lower affinity for P-glycoprotein 1 than Docetaxel^{[1][2][3]}.

REFERENCES

- [1]. Diéras V, et al. Phase II multicenter study of larotaxel (XRP9881), a novel taxoid, in patients with metastatic breast cancer who previously received taxane-based therapy. *Ann Oncol.* 2008 Jul;19(7):1255-60.
- [2]. Morris PG, et al. Novel anti-tubulin cytotoxic agents for breast cancer. *Expert Rev Anticancer Ther.* 2009 Feb;9(2):175-85.
- [3]. Zatloukal P, et al. Randomized multicenter phase II study of larotaxel (XRP9881) in combination with cisplatin or gemcitabine as first-line chemotherapy in

Caution: Product has not been fully validated for medical applications. For research use only.

Tel: 609-228-6898

Fax: 609-228-5909

E-mail: tech@MedChemExpress.com

Address: 1 Deer Park Dr, Suite Q, Monmouth Junction, NJ 08852, USA