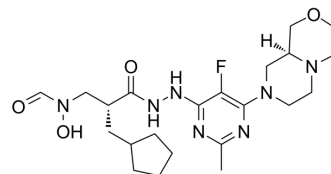


Lanopepden

Cat. No.:	HY-12480		
CAS No.:	1152107-25-9		
Molecular Formula:	C ₂₂ H ₃₄ FN ₇ O ₄		
Molecular Weight:	479.55		
Target:	Bacterial		
Pathway:	Anti-infection		
Storage:	Powder	-20°C	3 years
		4°C	2 years
	In solvent	-80°C	6 months
		-20°C	1 month



SOLVENT & SOLUBILITY

In Vitro	DMSO : 30 mg/mL (62.56 mM; Need ultrasonic)				
		Solvent Concentration	Mass 1 mg	5 mg	10 mg
	Preparing Stock Solutions	1 mM	2.0853 mL	10.4264 mL	20.8529 mL
		5 mM	0.4171 mL	2.0853 mL	4.1706 mL
10 mM		0.2085 mL	1.0426 mL	2.0853 mL	
Please refer to the solubility information to select the appropriate solvent.					
In Vivo	1. Add each solvent one by one: 10% DMSO >> 40% PEG300 >> 5% Tween-80 >> 45% saline Solubility: ≥ 3 mg/mL (6.26 mM); Clear solution				
	2. Add each solvent one by one: 10% DMSO >> 90% corn oil Solubility: ≥ 3 mg/mL (6.26 mM); Clear solution				

BIOLOGICAL ACTIVITY

Description	Lanopepden (GSK 1322322) is a peptide deformylase inhibitor active against Staphylococcus aureus strains with MICs of 1 and 1 mg/L for ATCC 29213 and ATCC 25923 strain, respectively ^[1] .
-------------	--

REFERENCES

[1]. Peyrusson F, et al. Cellular pharmacokinetics and intracellular activity of the novel peptide deformylase inhibitor GSK1322322 against Staphylococcus aureus laboratory and clinical strains with various resistance phenotypes: studies with human THP-1 monoc

Caution: Product has not been fully validated for medical applications. For research use only.

Tel: 609-228-6898

Fax: 609-228-5909

E-mail: tech@MedChemExpress.com

Address: 1 Deer Park Dr, Suite Q, Monmouth Junction, NJ 08852, USA