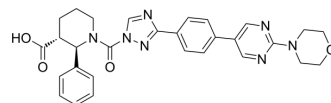


LYPLAL1-IN-1

Cat. No.:	HY-124700
CAS No.:	1966129-74-7
Molecular Formula:	C ₂₉ H ₂₉ N ₇ O ₄
Molecular Weight:	539.59
Target:	Others
Pathway:	Others
Storage:	4°C, sealed storage, away from moisture and light * In solvent : -80°C, 6 months; -20°C, 1 month (sealed storage, away from moisture and light)



BIOLOGICAL ACTIVITY

Description LYPLAL1-IN-1 (Compound 11) is an selective covalent small-molecule inhibitor of Lysophospholipase-like 1 (LYPLAL1) with an IC₅₀ of 0.006 μM. LYPLAL1-IN-1 increases glucose production^[1].

IC₅₀ & Target IC50: 0.006 μM (LYPLAL1-IN-1)^[1]

CUSTOMER VALIDATION

- Mol Cell. 2023 Oct 5;83(19):3520-3532.e7.

See more customer validations on www.MedChemExpress.com

REFERENCES

[1]. Ahn K, et al. Discovery of a Selective Covalent Inhibitor of Lysophospholipase-like 1 (LYPLAL1) as a Tool to Evaluate the Role of this Serine Hydrolase in Metabolism. ACS Chem Biol. 2016 Sep 16;11(9):2529-40.

[2]. Ahn K, et al. Discovery of a Selective Covalent Inhibitor of Lysophospholipase-like 1 (LYPLAL1) as a Tool to Evaluate the Role of this Serine Hydrolase in Metabolism. ACS Chem Biol. 2016 Sep 16;11(9):2529-40.

Caution: Product has not been fully validated for medical applications. For research use only.

Tel: 609-228-6898

Fax: 609-228-5909

E-mail: tech@MedChemExpress.com

Address: 1 Deer Park Dr, Suite Q, Monmouth Junction, NJ 08852, USA