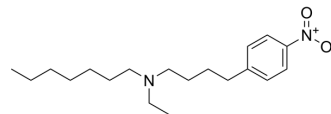


LY 97241

Cat. No.:	HY-119211
CAS No.:	72456-63-4
Molecular Formula:	C ₁₉ H ₃₂ N ₂ O ₂
Molecular Weight:	320.47
Target:	Potassium Channel
Pathway:	Membrane Transporter/Ion Channel
Storage:	Please store the product under the recommended conditions in the Certificate of Analysis.



BIOLOGICAL ACTIVITY

Description

LY 97241 accelerates the apparent rate of inactivation of transient outward K current. LY 97241 is an antiarrhythmic drug^[1].

REFERENCES

[1]. Z H Zhang, et al. LY 97241 accelerates the apparent rate of inactivation of transient outward K⁺ current: characterization of open channel block. J Pharmacol Exp Ther. 1995 Jul;274(1):249-57.

Caution: Product has not been fully validated for medical applications. For research use only.

Tel: 609-228-6898

Fax: 609-228-5909

E-mail: tech@MedChemExpress.com

Address: 1 Deer Park Dr, Suite Q, Monmouth Junction, NJ 08852, USA