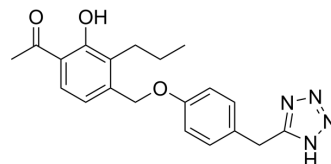


LY 163443

Cat. No.:	HY-113758
CAS No.:	97581-70-9
Molecular Formula:	C ₂₀ H ₂₂ N ₄ O ₃
Molecular Weight:	366.41
Target:	Leukotriene Receptor
Pathway:	GPCR/G Protein
Storage:	Please store the product under the recommended conditions in the Certificate of Analysis.



BIOLOGICAL ACTIVITY

Description

LY 163443 is a selective antagonist of leukotrienes D₄ (LTD₄) and E₄ (LTE₄). LY 163443 can antagonize LTD₄-induced contractions of guinea pig ileum, trachea, and lung parenchyma. LY 163443 also inhibits tracheal contractions to LTE₄^{[1][2]}.

REFERENCES

[1]. Fleisch JH, et, al. Evaluation of LY163443, 1-[2-hydroxy-3-propyl-4-((4-(1H-tetrazol-5-ylmethyl)phenoxy)methyl) phenyl]ethanone, as a pharmacologic antagonist of leukotrienes D₄ and E₄. *Naunyn Schmiedebergs Arch Pharmacol.* 1986 May;333(1):70-7.

[2]. Bitterman H, et, al. Use of a novel peptide leukotriene receptor antagonist, Ly-163443, in splanchnic artery occlusion shock. *Prostaglandins Leukot Essent Fatty Acids.* 1988 May;32(2):63-70.

Caution: Product has not been fully validated for medical applications. For research use only.

Tel: 609-228-6898

Fax: 609-228-5909

E-mail: tech@MedChemExpress.com

Address: 1 Deer Park Dr, Suite Q, Monmouth Junction, NJ 08852, USA