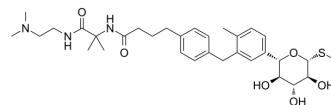


LX2761

Cat. No.:	HY-101122
CAS No.:	1610954-97-6
Molecular Formula:	C ₃₂ H ₄₇ N ₃ O ₆ S
Molecular Weight:	601.8
Target:	SGLT
Pathway:	Membrane Transporter/Ion Channel
Storage:	Please store the product under the recommended conditions in the Certificate of Analysis.



BIOLOGICAL ACTIVITY

Description	LX2761 is chemically stable and potent inhibitor against sodium-dependent glucose cotransporter 1 (SGLT1) and SGLT2 in vitro with IC ₅₀ s of 2.2 nM and 2.7nM for hSGLT1 and hSGLT2, but displays specific SGLT1 inhibition in the gastrointestinal (GI) tract ^[1] .
IC ₅₀ & Target	IC ₅₀ : 2.2 nM (hSGLT1), 2.7nM (hSGLT2) ^[1]

REFERENCES

[1]. Goodwin NC, et al. Discovery of LX2761, a Sodium-Dependent Glucose Cotransporter 1 (SGLT1) Inhibitor Restricted to the Intestinal Lumen, for the Treatment of Diabetes. J Med Chem. 2017 Jan 26;60(2):710-721.

Caution: Product has not been fully validated for medical applications. For research use only.

Tel: 609-228-6898

Fax: 609-228-5909

E-mail: tech@MedChemExpress.com

Address: 1 Deer Park Dr, Suite Q, Monmouth Junction, NJ 08852, USA