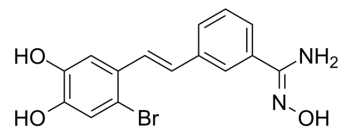


LSD1-IN-5

Cat. No.:	HY-100859
CAS No.:	2035912-55-9
Molecular Formula:	C ₁₅ H ₁₃ BrN ₂ O ₃
Molecular Weight:	349.18
Target:	Histone Demethylase
Pathway:	Epigenetics
Storage:	Please store the product under the recommended conditions in the Certificate of Analysis.



BIOLOGICAL ACTIVITY

Description	LSD1-IN-5 (Compound 4e) is a potent and reversible inhibitor of lysine-specific demethylase 1 (LSD1), with an IC ₅₀ of 121 nM. LSD1-IN-5 increases dimethylated Lys4 of histone H3, shows no effect on expression of LSD1 ^[1] .
IC ₅₀ & Target	IC50: 121 nM (LSD1) ^[1]

REFERENCES

[1]. Duan YC, et al. Discovery of resveratrol derivatives as novel LSD1 inhibitors: Design, synthesis and their biological evaluation. Eur J Med Chem. 2017 Jan 27;126:246-258.

Caution: Product has not been fully validated for medical applications. For research use only.

Tel: 609-228-6898

Fax: 609-228-5909

E-mail: tech@MedChemExpress.com

Address: 1 Deer Park Dr, Suite Q, Monmouth Junction, NJ 08852, USA