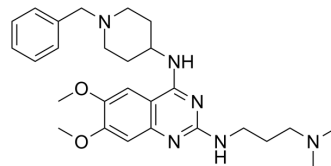


## LSD1-IN-20

Cat. No.:	HY-146285
CAS No.:	1239589-91-3
Molecular Formula:	C <sub>27</sub> H <sub>38</sub> N <sub>6</sub> O <sub>2</sub>
Molecular Weight:	478.63
Target:	Histone Demethylase; Histone Methyltransferase
Pathway:	Epigenetics
Storage:	Please store the product under the recommended conditions in the Certificate of Analysis.



### BIOLOGICAL ACTIVITY

Description	LSD1-IN-20 (compound 1) is a potent dual non-covalent LSD1/G9a inhibitor, with K <sub>i</sub> values of 0.44 and 0.68 μM, respectively. LSD1-IN-20 shows antiproliferative activity in THP-1 leukemia cells and MDA-MB-231 breast cancer cells, with IC <sub>50</sub> (72 h) of 0.51 and 1.60 μM, respectively <sup>[1]</sup> .
IC <sub>50</sub> & Target	K <sub>i</sub> of 0.440 ± 0.05 μM (LSD1), 0.68 ± 0.02 μM (G9a) <sup>[1]</sup>

### REFERENCES

[1]. Menna M, et al. Novel non-covalent LSD1 inhibitors endowed with anticancer effects in leukemia and solid tumor cellular models. *Eur J Med Chem.* 2022 Jul 5;237:114410.

**Caution: Product has not been fully validated for medical applications. For research use only.**

Tel: 609-228-6898

Fax: 609-228-5909

E-mail: tech@MedChemExpress.com

Address: 1 Deer Park Dr, Suite Q, Monmouth Junction, NJ 08852, USA