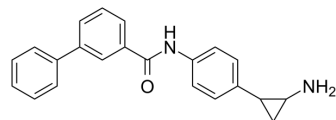


LSD1-IN-15

Cat. No.:	HY-144756
Molecular Formula:	C ₂₂ H ₂₀ N ₂ O
Molecular Weight:	328.41
Target:	Histone Demethylase; Monoamine Oxidase
Pathway:	Epigenetics; Neuronal Signaling
Storage:	Please store the product under the recommended conditions in the Certificate of Analysis.



BIOLOGICAL ACTIVITY

Description	LSD1-IN-15 (compound 1b) is a potent LSD1 inhibitor. LSD1-IN-15 can inhibit LSD1-CoREST, MAO-A and MAO-B, with IC ₅₀ values of 0.149, 0.028, and 0.327 μM, respectively. LSD1-IN-15 displays cell growth arrest in prostate cancer LNCaP cells, with an IC ₅₀ of 9.9 μM ^[1] .	
IC ₅₀ & Target	MAO-A 0.028 ± 0. μM (IC ₅₀)	MAO-B 0.327 ± 0. μM (IC ₅₀)

REFERENCES

[1]. Fioravanti R, et al. Heterocycle-containing tranylcypromine derivatives endowed with high anti-LSD1 activity. J Enzyme Inhib Med Chem. 2022 Dec;37(1):973-985.

Caution: Product has not been fully validated for medical applications. For research use only.

Tel: 609-228-6898

Fax: 609-228-5909

E-mail: tech@MedChemExpress.com

Address: 1 Deer Park Dr, Suite Q, Monmouth Junction, NJ 08852, USA