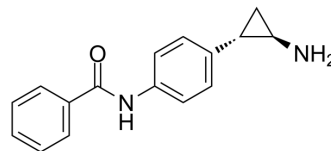


LSD1-IN-12

Cat. No.:	HY-144673
CAS No.:	1228143-76-7
Molecular Formula:	C ₁₆ H ₁₆ N ₂ O
Molecular Weight:	252.31
Target:	Histone Demethylase; Monoamine Oxidase
Pathway:	Epigenetics; Neuronal Signaling
Storage:	Please store the product under the recommended conditions in the Certificate of Analysis.



BIOLOGICAL ACTIVITY

Description	LSD1-IN-12 (compound 2) is a potent LSD1 inhibitor, with K _i values of 1.1 μM (LSD1), 61 μM (LSD2), 2.3 μM (MAO-A), and 3.5 μM (MAO-B), respectively ^[1] .	
IC ₅₀ & Target	MAO-A 2.3 μM (K _i)	MAO-B 3.5 μM (K _i)

REFERENCES

[1]. Li C, et al. Structure-Activity Relationship Study of Indolin-5-yl-cyclopropanamine Derivatives as Selective Lysine Specific Demethylase 1 (LSD1) Inhibitors. J Med Chem. 2022 Mar 10;65(5):4335-4349.

Caution: Product has not been fully validated for medical applications. For research use only.

Tel: 609-228-6898

Fax: 609-228-5909

E-mail: tech@MedChemExpress.com

Address: 1 Deer Park Dr, Suite Q, Monmouth Junction, NJ 08852, USA