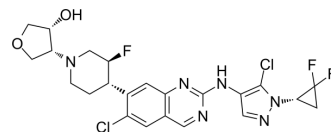


LRRK2-IN-2

| | |
|--------------------|--|
| Cat. No.: | HY-145317 |
| CAS No.: | 2641059-19-8 |
| Molecular Formula: | C ₂₃ H ₂₃ Cl ₂ F ₃ N ₆ O ₂ |
| Molecular Weight: | 543.37 |
| Target: | LRRK2 |
| Pathway: | Autophagy |
| Storage: | Please store the product under the recommended conditions in the Certificate of Analysis. |



BIOLOGICAL ACTIVITY

| | |
|---------------------------|---|
| Description | LRRK2-IN-2 (compoubd 22) is a potent, selective, orally active and brain-penetrant inhibitor LRRK2, with IC ₅₀ of <0.6 nM. LRRK2-IN-2 can be used for the research of Parkinson's disease ^[1] . |
| IC ₅₀ & Target | IC ₅₀ : <0.6 nM (LRRK2) ^[1] |

REFERENCES

[1]. Keylor MH, et, al. Structure-Guided Discovery of Aminoquinazolines as Brain-Penetrant and Selective LRRK2 Inhibitors. J Med Chem. 2022 Jan 13;65(1):838-856.

Caution: Product has not been fully validated for medical applications. For research use only.

Tel: 609-228-6898

Fax: 609-228-5909

E-mail: tech@MedChemExpress.com

Address: 1 Deer Park Dr, Suite Q, Monmouth Junction, NJ 08852, USA