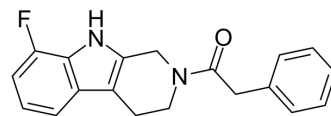


## LG308

Cat. No.:	HY-143660
CAS No.:	1428341-65-4
Molecular Formula:	C <sub>19</sub> H <sub>17</sub> FN <sub>2</sub> O
Molecular Weight:	308.35
Target:	Microtubule/Tubulin; Apoptosis
Pathway:	Cell Cycle/DNA Damage; Cytoskeleton; Apoptosis
Storage:	Please store the product under the recommended conditions in the Certificate of Analysis.



## BIOLOGICAL ACTIVITY

### Description

LG308 is a novel synthetic compound with antimicrotubule activity. LG308 induces mitotic phase arrest and inhibits G2/M progression significantly which is associated with the upregulation of cyclin B1 and mitotic marker MPM-2 and the dephosphorylation of cdc2. LG308 also induces apoptosis and cell death. LG308 significantly suppresses tumor growth. LG308 with antimitotic activity has the potential for the research of prostate cancer<sup>[1]</sup>.

## REFERENCES

[1]. Qin M, et al. LG308, a Novel Synthetic Compound with Antimicrotubule Activity in Prostate Cancer Cells, Exerts Effective Antitumor Activity. *J Pharmacol Exp Ther.* 2015;355(3):473-483.

**Caution: Product has not been fully validated for medical applications. For research use only.**

Tel: 609-228-6898

Fax: 609-228-5909

E-mail: tech@MedChemExpress.com

Address: 1 Deer Park Dr, Suite Q, Monmouth Junction, NJ 08852, USA