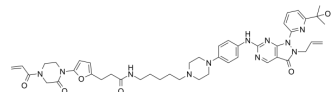


LEB-03-145

Cat. No.:	HY-143340
CAS No.:	2858812-90-3
Molecular Formula:	C ₄₅ H ₅₅ N ₁₁ O ₆
Molecular Weight:	845.99
Target:	Wee1
Pathway:	Cell Cycle/DNA Damage
Storage:	Please store the product under the recommended conditions in the Certificate of Analysis.



BIOLOGICAL ACTIVITY

Description	LEB-03-145 is a WEE1 DUBTAC (deubiquitinase-targeting chimera) linking AZD1775 (Adavosertib) to the OTUB1 recruiter EN523 through a C5 alkyl linker ^[1] .
--------------------	--

REFERENCES

[1]. Henning NJ, et al. Deubiquitinase-targeting chimeras for targeted protein stabilization. Nat Chem Biol. 2022 Apr;18(4):412-421.

Caution: Product has not been fully validated for medical applications. For research use only.

Tel: 609-228-6898

Fax: 609-228-5909

E-mail: tech@MedChemExpress.com

Address: 1 Deer Park Dr, Suite Q, Monmouth Junction, NJ 08852, USA