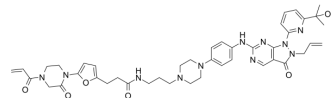


## LEB-03-144

Cat. No.:	HY-143342
CAS No.:	2858812-89-0
Molecular Formula:	C <sub>43</sub> H <sub>51</sub> N <sub>11</sub> O <sub>6</sub>
Molecular Weight:	817.94
Target:	Wee1
Pathway:	Cell Cycle/DNA Damage
Storage:	Please store the product under the recommended conditions in the Certificate of Analysis.



## BIOLOGICAL ACTIVITY

### Description

LEB-03-144 is a WEE1 DUBTAC (deubiquitinase-targeting chimera) linking AZD1775 (Adavosertib) to the OTUB1 recruiter EN523 through a C3 alkyl linker. LEB-03-144 shows significant WEE1 stabilization in HEP3B hepatoma cancer cells<sup>[1]</sup>.

## REFERENCES

[1]. Henning NJ, et al. Deubiquitinase-targeting chimeras for targeted protein stabilization. Nat Chem Biol. 2022 Apr;18(4):412-421.

**Caution: Product has not been fully validated for medical applications. For research use only.**

Tel: 609-228-6898

Fax: 609-228-5909

E-mail: tech@MedChemExpress.com

Address: 1 Deer Park Dr, Suite Q, Monmouth Junction, NJ 08852, USA