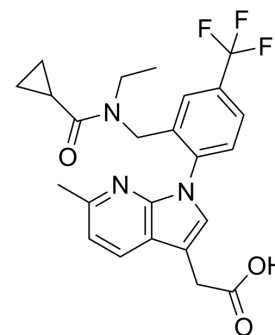


LAS191859

Cat. No.:	HY-123596
CAS No.:	1420071-13-1
Molecular Formula:	C ₂₄ H ₂₄ F ₃ N ₃ O ₃
Molecular Weight:	459.46
Target:	Prostaglandin Receptor
Pathway:	GPCR/G Protein
Storage:	Please store the product under the recommended conditions in the Certificate of Analysis.



BIOLOGICAL ACTIVITY

Description	LAS191859 is an orally active, potent and selective CRTh2 antagonist with an IC ₅₀ of 9.58 nM against human CRTh2. LAS191859 can be used for the research of chronic asthma ^[1] .
IC ₅₀ & Target	IC ₅₀ : 7.6 nM (guinea pig CRTh2), 9.58 nM (human CRTh2), 14 nM (rat CRTh2), 15.5 nM (mouse CRTh2) ^[1]

REFERENCES

[1]. Calbet M, et al. Pharmacological characterization of CRTh2 antagonist LAS191859: Long receptor residence time translates into long-lasting in vivo efficacy. Pharmacol Res. 2016 Sep;111:208-216.

Caution: Product has not been fully validated for medical applications. For research use only.

Tel: 609-228-6898

Fax: 609-228-5909

E-mail: tech@MedChemExpress.com

Address: 1 Deer Park Dr, Suite Q, Monmouth Junction, NJ 08852, USA