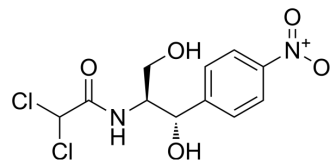


L-(+)-threo-Chloramphenicol

Cat. No.:	HY-117682
CAS No.:	134-90-7
Molecular Formula:	C ₁₁ H ₁₂ Cl ₂ N ₂ O ₅
Molecular Weight:	323.13
Target:	Antibiotic
Pathway:	Anti-infection
Storage:	Please store the product under the recommended conditions in the Certificate of Analysis.



BIOLOGICAL ACTIVITY

Description

L-(+)-threo-Chloramphenicol ((+)-Chloramphenicol) is the S,S-stereoisomer of Chloramphenicol (HY-B0239). L-(+)-Threo-chloramphenicol inhibits protein synthesis in reticulocytes. L-(+)-threo-Chloramphenicol also inhibits the oxidative activity of isolated mitochondria^{[1][2]}.

REFERENCES

[1]. 3rd WG, et, al. The effect of chloramphenicol in intact erythroid cells. J Mol Biol. 1966 Nov 28;21(3):537-53.

[2]. Gordon PA, et, al. Effects of chloramphenicol isomers and erythromycin on enzyme and lipid synthesis induced by oxygen in wild-type and petite yeast. J Bacteriol. 1972 May;110(2):504-10.

Caution: Product has not been fully validated for medical applications. For research use only.

Tel: 609-228-6898

Fax: 609-228-5909

E-mail: tech@MedChemExpress.com

Address: 1 Deer Park Dr, Suite Q, Monmouth Junction, NJ 08852, USA