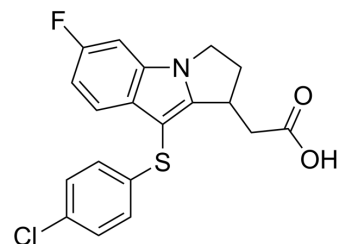


## L 888607 Racemate

<b>Cat. No.:</b>	HY-111271A		
<b>CAS No.:</b>	1030017-51-6		
<b>Molecular Formula:</b>	C <sub>19</sub> H <sub>15</sub> ClFNO <sub>2</sub> S		
<b>Molecular Weight:</b>	375.84		
<b>Target:</b>	Prostaglandin Receptor		
<b>Pathway:</b>	GPCR/G Protein		
<b>Storage:</b>	Powder	-20°C	3 years
		4°C	2 years
	In solvent	-80°C	6 months
		-20°C	1 month



### SOLVENT & SOLUBILITY

<b>In Vitro</b>	DMSO : 6 mg/mL (15.96 mM; Need ultrasonic)			
		Solvent Concentration	Mass	
			1 mg	5 mg
	<b>Preparing Stock Solutions</b>		10 mg	
	<b>1 mM</b>	2.6607 mL	13.3035 mL	26.6071 mL
	<b>5 mM</b>	0.5321 mL	2.6607 mL	5.3214 mL
	<b>10 mM</b>	0.2661 mL	1.3304 mL	2.6607 mL
Please refer to the solubility information to select the appropriate solvent.				
<b>In Vivo</b>	<ol style="list-style-type: none"> <li>Add each solvent one by one: 10% DMSO &gt;&gt; 40% PEG300 &gt;&gt; 5% Tween-80 &gt;&gt; 45% saline Solubility: ≥ 0.6 mg/mL (1.60 mM); Clear solution</li> <li>Add each solvent one by one: 10% DMSO &gt;&gt; 90% (20% SBE-β-CD in saline) Solubility: ≥ 0.6 mg/mL (1.60 mM); Clear solution</li> <li>Add each solvent one by one: 10% DMSO &gt;&gt; 90% corn oil Solubility: ≥ 0.6 mg/mL (1.60 mM); Clear solution</li> </ol>			

### BIOLOGICAL ACTIVITY

<b>Description</b>	L 888607 Racemate is a selective prostaglandin D <sub>2</sub> receptor subtype 1 (DP1) antagonist, with K <sub>i</sub> s of 132 nM and 17 nM for DP1 and thromboxane A <sub>2</sub> receptor (TP), respectively.	
<b>IC<sub>50</sub> &amp; Target</b>	TP 17 nM (K <sub>i</sub> )	DP1 132 nM (K <sub>i</sub> )
<b>In Vitro</b>	L 888607 Racemate (compound 3) maintains a modest binding affinity for the DP1 receptor (K <sub>i</sub> = 132 nM) and is actually 8-	

---

fold more potent on the TP receptor ( $K_i = 17 \text{ nM}$ )<sup>[1]</sup>.

MCE has not independently confirmed the accuracy of these methods. They are for reference only.

---

## REFERENCES

---

[1]. Beaulieu C, et al. Identification of prostaglandin D2 receptor antagonists based on a tetrahydropyridoindole scaffold. *Bioorg Med Chem Lett*. 2008 Apr 15;18(8):2696-700.

---

**Caution: Product has not been fully validated for medical applications. For research use only.**

Tel: 609-228-6898

Fax: 609-228-5909

E-mail: [tech@MedChemExpress.com](mailto:tech@MedChemExpress.com)

Address: 1 Deer Park Dr, Suite Q, Monmouth Junction, NJ 08852, USA