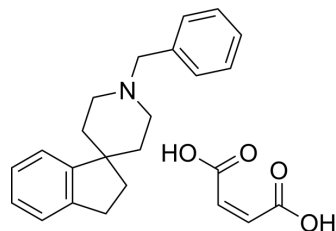


L-693403 maleate

Cat. No.:	HY-100930
CAS No.:	207455-21-8
Molecular Formula:	C ₂₄ H ₂₇ NO ₄
Molecular Weight:	393.48
Target:	Sigma Receptor
Pathway:	Neuronal Signaling
Storage:	Please store the product under the recommended conditions in the Certificate of Analysis.



BIOLOGICAL ACTIVITY

Description

L-693403 maleate is a high affinity and selective σ ligand. L-693403 maleate has the potential for physiological disease research^[1].

REFERENCES

[1]. Christoph A Maier, et al. Novel spiroperidines as highly potent and subtype selective sigma-receptor ligands. Part 1. J Med Chem. 2002 Jan 17;45(2):438-48.

Caution: Product has not been fully validated for medical applications. For research use only.

Tel: 609-228-6898

Fax: 609-228-5909

E-mail: tech@MedChemExpress.com

Address: 1 Deer Park Dr, Suite Q, Monmouth Junction, NJ 08852, USA