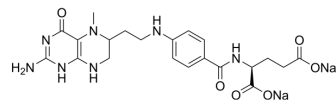


## Ketotrexate sodium

Cat. No.:	HY-105934A
CAS No.:	52386-42-2
Molecular Formula:	C <sub>21</sub> H <sub>25</sub> N <sub>7</sub> Na <sub>2</sub> O <sub>6</sub>
Molecular Weight:	517.45
Target:	Antifolate
Pathway:	Cell Cycle/DNA Damage
Storage:	Please store the product under the recommended conditions in the Certificate of Analysis.



### BIOLOGICAL ACTIVITY

#### Description

Ketotrexate sodium is an orally active antifolate and immunosuppressant. Ketotrexate sodium has good anti-inflammatory activity and is widely used in rheumatoid arthritis (RA). Ketotrexate sodium is used in research into cancer and autoimmune diseases<sup>[1][2]</sup>.

### REFERENCES

- [1]. Puig L. Methotrexate: new therapeutic approaches. *Actas Dermosifiliogr.* 2014 Jul-Aug;105(6):583-9.
- [2]. Torres RP, et al. Methotrexate: Implications of pharmacogenetics in the treatment of patients with Rheumatoid Arthritis. *ARP Rheumatol.* 2022 Oct 1;1(3):225-229.

**Caution: Product has not been fully validated for medical applications. For research use only.**

Tel: 609-228-6898

Fax: 609-228-5909

E-mail: tech@MedChemExpress.com

Address: 1 Deer Park Dr, Suite Q, Monmouth Junction, NJ 08852, USA