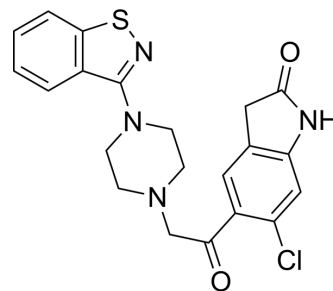


Keto Ziprasidone

Cat. No.:	HY-100648	
CAS No.:	884305-07-1	
Molecular Formula:	C ₂₁ H ₁₉ ClN ₄ O ₂ S	
Molecular Weight:	426.92	
Target:	5-HT Receptor; Dopamine Receptor	
Pathway:	GPCR/G Protein; Neuronal Signaling	
Storage:	Powder	-20°C 3 years
	In solvent	-80°C 6 months
		-20°C 1 month



SOLVENT & SOLUBILITY

In Vitro

DMSO : 25 mg/mL (58.56 mM); ultrasonic and warming and heat to 60°C)

Concentration	Solvent	Mass		
		1 mg	5 mg	10 mg
Preparing Stock Solutions	1 mM	2.3424 mL	11.7118 mL	23.4236 mL
	5 mM	0.4685 mL	2.3424 mL	4.6847 mL
	10 mM	0.2342 mL	1.1712 mL	2.3424 mL

Please refer to the solubility information to select the appropriate solvent.

BIOLOGICAL ACTIVITY

Description

Keto Ziprasidone is an impurity of Ziprasidone^[1]. Ziprasidone, an antipsychotic agent, is a combined 5-HT (serotonin) and dopamine receptor antagonist^[2].

REFERENCES

[1]. Sundaram Venkataraman, et al. Ziprasidone process. US7777037B2.

[2]. Seeger, T.F., et al., Ziprasidone (CP-88,059): a new antipsychotic with combined dopamine and serotonin receptor antagonist activity. J Pharmacol Exp Ther, 1995. 275(1): p. 101-13.

Caution: Product has not been fully validated for medical applications. For research use only.

Tel: 609-228-6898

Fax: 609-228-5909

E-mail: tech@MedChemExpress.com

Address: 1 Deer Park Dr, Suite Q, Monmouth Junction, NJ 08852, USA