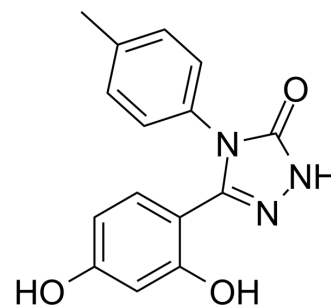


KPLH1130

Cat. No.:	HY-128578		
CAS No.:	906669-07-6		
Molecular Formula:	C ₁₅ H ₁₃ N ₃ O ₃		
Molecular Weight:	283.28		
Target:	PDHK		
Pathway:	Metabolic Enzyme/Protease		
Storage:	Powder	-20°C	3 years
		4°C	2 years
	In solvent	-80°C	2 years
		-20°C	1 year



SOLVENT & SOLUBILITY

In Vitro	DMSO : 135 mg/mL (476.56 mM; Need ultrasonic)				
		Solvent Concentration	Mass 1 mg	5 mg	10 mg
	Preparing Stock Solutions	1 mM	3.5301 mL	17.6504 mL	35.3008 mL
		5 mM	0.7060 mL	3.5301 mL	7.0602 mL
10 mM		0.3530 mL	1.7650 mL	3.5301 mL	
Please refer to the solubility information to select the appropriate solvent.					
In Vivo	1. Add each solvent one by one: 10% DMSO >> 40% PEG300 >> 5% Tween-80 >> 45% saline Solubility: ≥ 2.25 mg/mL (7.94 mM); Clear solution				

BIOLOGICAL ACTIVITY

Description	KPLH1130 is a specific pyruvate dehydrogenase kinase (PDK) inhibitor, blocks macrophage polarization and attenuates proinflammatory responses. KPLH1130 improves glucose tolerance in HFD-fed mice ^[1] .
IC₅₀ & Target	PDK ^[1]

REFERENCES

[1]. Min BK, et al. Pyruvate Dehydrogenase Kinase Is a Metabolic Checkpoint for Polarization of Macrophages to the M1 Phenotype. *Front Immunol.* 2019 May 7;10:944.

Caution: Product has not been fully validated for medical applications. For research use only.

Tel: 609-228-6898

Fax: 609-228-5909

E-mail: tech@MedChemExpress.com

Address: 1 Deer Park Dr, Suite Q, Monmouth Junction, NJ 08852, USA