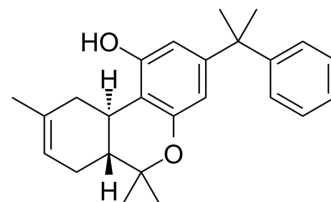


## KM-233

Cat. No.:	HY-123410
CAS No.:	628263-22-9
Molecular Formula:	C <sub>25</sub> H <sub>30</sub> O <sub>2</sub>
Molecular Weight:	362.5
Target:	Cannabinoid Receptor
Pathway:	GPCR/G Protein; Neuronal Signaling
Storage:	Please store the product under the recommended conditions in the Certificate of Analysis.



## BIOLOGICAL ACTIVITY

### Description

KM-233 is a classical cannabinoid with good blood brain barrier penetration. KM-233 possesses a selective affinity for the CB2 receptors relative to THC. KM-233 is effective at reducing U87 glioma tumor burden, and can be used for glioma research<sup>[1]</sup>.

## REFERENCES

[1]. Duntsch C, et al. Safety and efficacy of a novel cannabinoid chemotherapeutic, KM-233, for the treatment of high-grade glioma. *J Neurooncol.* 2006 Apr;77(2):143-52.

**Caution: Product has not been fully validated for medical applications. For research use only.**

Tel: 609-228-6898

Fax: 609-228-5909

E-mail: [tech@MedChemExpress.com](mailto:tech@MedChemExpress.com)

Address: 1 Deer Park Dr, Suite Q, Monmouth Junction, NJ 08852, USA