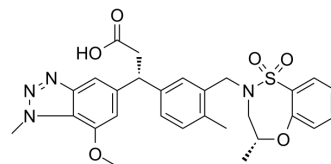


KI696 isomer

Cat. No.:	HY-101140A		
CAS No.:	1799974-69-8		
Molecular Formula:	C ₂₈ H ₃₀ N ₄ O ₆ S		
Molecular Weight:	550.63		
Target:	Keap1-Nrf2		
Pathway:	NF-κB		
Storage:	Powder	-20°C	3 years
		4°C	2 years
	In solvent	-80°C	2 years
		-20°C	1 year



SOLVENT & SOLUBILITY

In Vitro

DMSO : 125 mg/mL (227.01 mM; Need ultrasonic)

Concentration	Solvent	Mass	1 mg	5 mg	10 mg
Preparing Stock Solutions	1 mM		1.8161 mL	9.0805 mL	18.1610 mL
	5 mM		0.3632 mL	1.8161 mL	3.6322 mL
	10 mM		0.1816 mL	0.9081 mL	1.8161 mL

Please refer to the solubility information to select the appropriate solvent.

In Vivo

1. Add each solvent one by one: 10% DMSO >> 40% PEG300 >> 5% Tween-80 >> 45% saline
Solubility: ≥ 2.08 mg/mL (3.78 mM); Clear solution

BIOLOGICAL ACTIVITY

Description

KI696 isomer is the less active isomer of KI696 (HY-101140). KI696 is a high affinity probe that disrupts the Keap1/NRF2 interaction^[1].

REFERENCES

[1]. Davies TG, et al. Monoacidic Inhibitors of the Kelch-like ECH-Associated Protein 1: Nuclear Factor Erythroid 2-Related Factor 2 (KEAP1:NRF2) Protein-Protein Interaction with High Cell Potency Identified by Fragment-Based Discovery. J Med Chem. 2016 Apr 28

Caution: Product has not been fully validated for medical applications. For research use only.

Tel: 609-228-6898

Fax: 609-228-5909

E-mail: tech@MedChemExpress.com

Address: 1 Deer Park Dr, Suite Q, Monmouth Junction, NJ 08852, USA