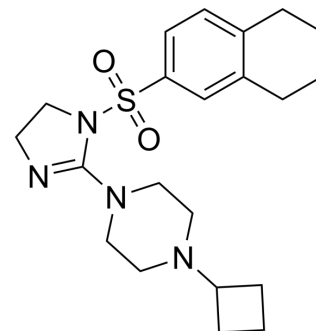


KDM2B-IN-1

Cat. No.:	HY-139560
CAS No.:	1965248-33-2
Molecular Formula:	C ₂₁ H ₃₀ N ₄ O ₂ S
Molecular Weight:	402.55
Target:	Histone Demethylase
Pathway:	Epigenetics
Storage:	Please store the product under the recommended conditions in the Certificate of Analysis.



BIOLOGICAL ACTIVITY

Description

KDM2B-IN-1 is a histone demethylase (kdm2b) inhibitor and can be used for hyperproliferative diseases research^[1].

REFERENCES

[1]. Brian K. Albrecht, et al. 4,5-dihydroimidazole derivatives and their use as histone demethylase (kdm2b) inhibitors. Patent WO2016112251A1.

Caution: Product has not been fully validated for medical applications. For research use only.

Tel: 609-228-6898

Fax: 609-228-5909

E-mail: tech@MedChemExpress.com

Address: 1 Deer Park Dr, Suite Q, Monmouth Junction, NJ 08852, USA