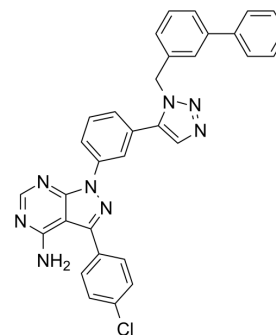


## KB SRC 4

<b>Cat. No.:</b>	HY-108488		
<b>CAS No.:</b>	1380088-03-8		
<b>Molecular Formula:</b>	C <sub>32</sub> H <sub>23</sub> ClN <sub>8</sub>		
<b>Molecular Weight:</b>	555.03		
<b>Target:</b>	Src		
<b>Pathway:</b>	Protein Tyrosine Kinase/RTK		
<b>Storage:</b>	Powder	-20°C	3 years
		4°C	2 years
	In solvent	-80°C	6 months
		-20°C	1 month



## SOLVENT & SOLUBILITY

### In Vitro

DMSO : 100 mg/mL (180.17 mM; Need ultrasonic)

Concentration	Mass		
	1 mg	5 mg	10 mg
<b>1 mM</b>	1.8017 mL	9.0085 mL	18.0170 mL
<b>5 mM</b>	0.3603 mL	1.8017 mL	3.6034 mL
<b>10 mM</b>	0.1802 mL	0.9009 mL	1.8017 mL

Please refer to the solubility information to select the appropriate solvent.

## BIOLOGICAL ACTIVITY

### Description

KB SRC 4 is a potent, and highly selective c-Src inhibitor, with a K<sub>i</sub> of 44 nM and a K<sub>d</sub> of 86 nM, and shows no inhibition on c-Abl up to 125 μM; KB SRC 4 has antitumor activity.

### IC<sub>50</sub> & Target

K<sub>i</sub>: 44 nM (c-Src)<sup>[1]</sup>  
K<sub>d</sub>: 86 nM (c-Src)<sup>[1]</sup>

### In Vitro

KB SRC 4 (Compound 4) is a potent, highly selective c-Src inhibitor, with a K<sub>i</sub> of 44 nM and a K<sub>d</sub> of 86 nM, and shows no inhibition on c-Abl up to 125 μM. KB SRC 4 is selective between Src family members, with >2-fold selectivity over both Lck (K<sub>d</sub>, 160 nM) and Fgr (K<sub>d</sub>, 240 nM), 8-fold selectivity over c-Yes (K<sub>d</sub>, 720 nM), and >40-fold selectivity over Lyn (K<sub>d</sub>, 3200 nM), Hck (K<sub>d</sub>, 4400 nM), and Fyn (K<sub>d</sub>, >40000 nM). KB SRC 4 inhibits the growth of cancer cell lines, with GI<sub>50</sub>s of 11 μM, 12 μM, 11 μM, 6.0 μM against HT-29, SK-BR-3, MCF7, MDA-MB-453, and NIH-3T3, respectively<sup>[1]</sup>.

MCE has not independently confirmed the accuracy of these methods. They are for reference only.

## REFERENCES

**Caution: Product has not been fully validated for medical applications. For research use only.**

Tel: 609-228-6898

Fax: 609-228-5909

E-mail: [tech@MedChemExpress.com](mailto:tech@MedChemExpress.com)

Address: 1 Deer Park Dr, Suite Q, Monmouth Junction, NJ 08852, USA