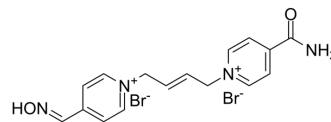


K203

Cat. No.:	HY-146959
Molecular Formula:	C ₁₆ H ₁₈ Br ₂ N ₄ O ₂
Molecular Weight:	458.15
Target:	AChE
Pathway:	Neuronal Signaling
Storage:	Please store the product under the recommended conditions in the Certificate of Analysis.



BIOLOGICAL ACTIVITY

Description

K203 is a potent reactivator of tabun-inhibited AChE. K203 is a crucial antidote used for the organophosphate intoxication^[1].

REFERENCES

[1]. Kamil Musilek, et al. Design of a potent reactivator of tabun-inhibited acetylcholinesterase--synthesis and evaluation of (E)-1-(4-carbamoylpyridinium)-4-(4-hydroxyiminomethylpyridinium)-but-2-ene dibromide (K203). J Med Chem. 2007 Nov 1;50(22):5514-8.

Caution: Product has not been fully validated for medical applications. For research use only.

Tel: 609-228-6898

Fax: 609-228-5909

E-mail: tech@MedChemExpress.com

Address: 1 Deer Park Dr, Suite Q, Monmouth Junction, NJ 08852, USA